

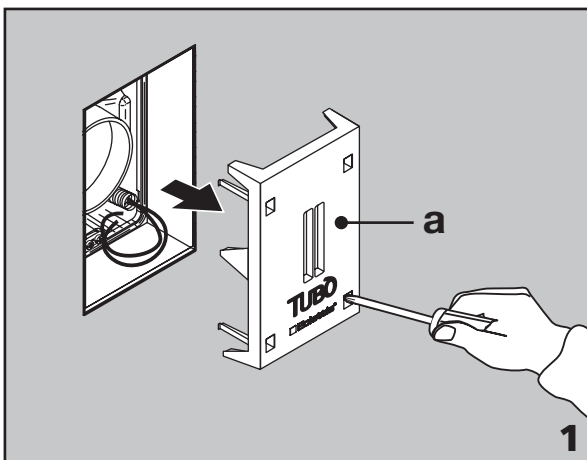
**PA800 - PRESA ECLETTIS / ECLETTIS POWER SOCKET**

- |   |   |
|---|---|
| 1 | TELAIO / FRAME                            |
| 2 | CORPO PRESA ECLETTIS / SOCKET BODY        |
| 3 | SPORTELLINO PRESA / SOCKET FLAP           |
| 4 | VITI DI FISSAGGIO / FIXING SCREWS         |
| 5 | COLLEGAMENTO ELETTRICO / ELECTRICAL WIRES |

La presa Eclettis va montata sulla contropresa già predisposta nella parete in muratura o cartongesso.

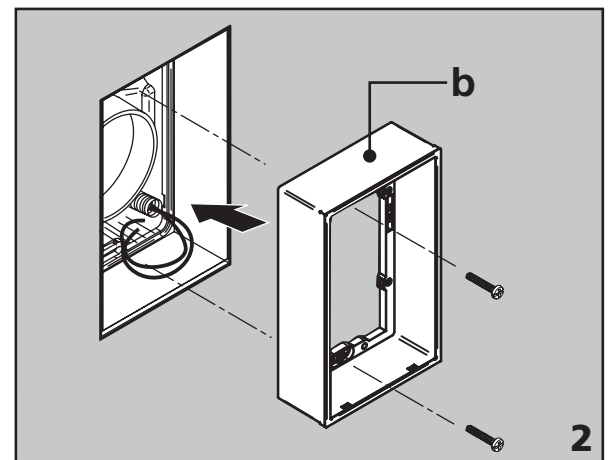
The Eclettis power socket shall be installed on the socket frame already positioned on brickwork or plasterboard walls.

**INSTALLAZIONE TELAIO / FRAME INSTALLATION**



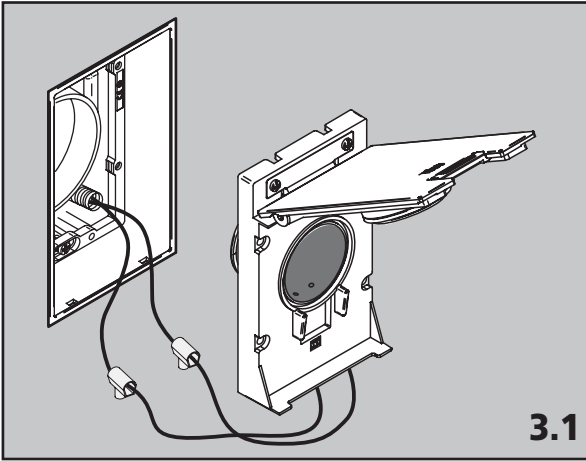
Estrarre il coperchio (a) del controtelaio facendo leva su uno dei 4 fori rettangolari.

Remove the socket frame cover (a) by prizing out with a screwdriver in one of the four rectangular holes.



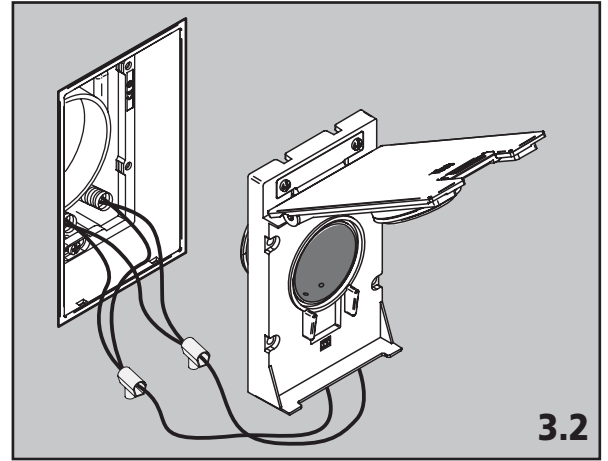
Inserire il telaio (b) della presa Eclettis nel controtelaio e fissarlo con le 2 viti in dotazione.

Insert frame (b) of the Eclettis socket into the socket frame and secure with the two screws provided.



3.1

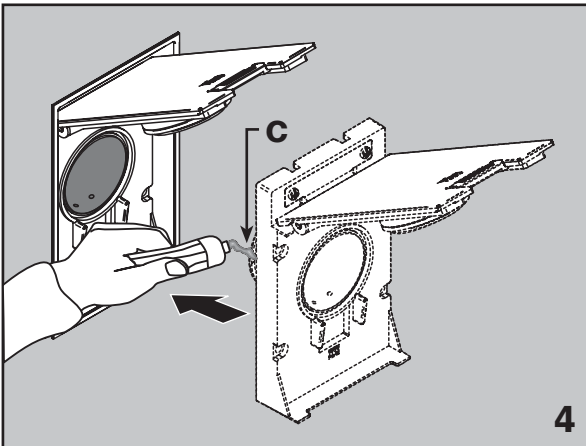
Collegamento elettrico tra i cavi del corpo presa e i cavi della contropresa mediante gli appositi morsetti.  
*Connect the wires of the socket to those of the socket frame using the wire connectors provided.*



3.2

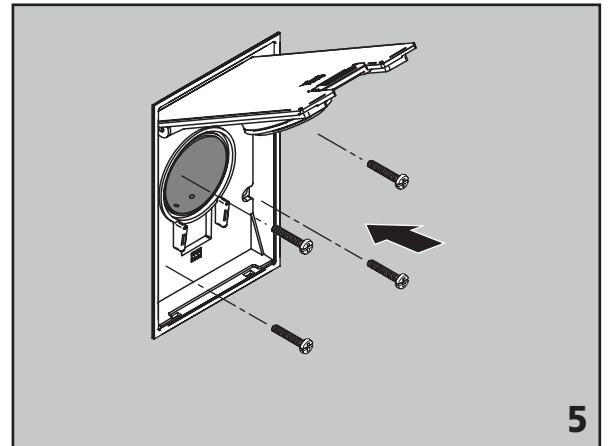
Collegamento elettrico in successione tra le prese aspiranti.  
*Connect the remaining vacuum sockets in sequence.*

INSERIMENTO PRESA / SOCKET INSTALLATION



4

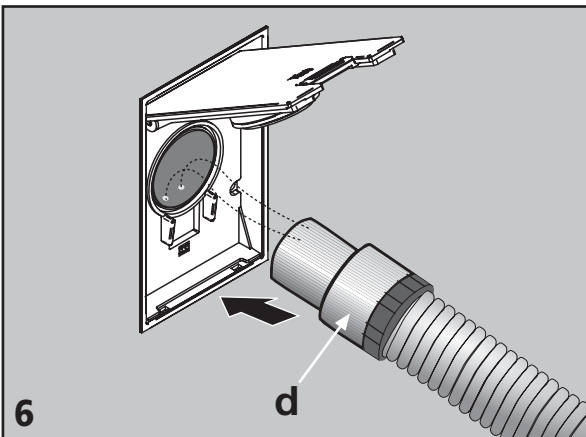
Applicare una dose di grasso scivolante per prese sulla guarnizione OR (c) e inserire il corpo presa nel telaio.  
*Smear the O-ring (c) with grease for power sockets and place the socket body into the frame.*



5

Fissare il corpo presa al telaio mediante le 4 viti in dotazione.  
*Fix the socket body to the frame with the four screws provided.*

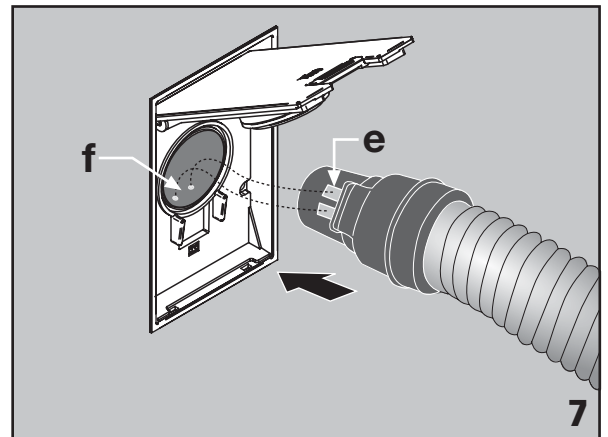
ATTIVAZIONE PRESA / SOCKET ACTIVATION



6

**TUBO FLESSIBILE CON RACCORDO ATTIVATORE:** la centrale aspirante si accende inserendo il raccordo (d) nella presa aspirante.  
*FLEXIBLE HOSE WITH ACTIVATION RING:* the power unit turns on by inserting the hose nozzle (d) into the vacuum socket.

*FLEXIBLE HOSE WITH ACTIVATION RING:* the power unit turns on by inserting the hose nozzle (d) into the vacuum socket.



7

**TUBO FLESSIBILE CON INTERRUTTORE:** la centrale aspirante si attiva accostando le piastrelle (e) del raccordo ai contatti elettrici (f) interni alla presa aspirante.  
*FLEXIBLE HOSE WITH SWITCH:* the power unit turns on by approaching the plates (e) of the hose nozzle to the electrical contacts (f) of the vacuum socket.